

15F-SAD/RAD-02 NOS
128 CMH-3 SLOT
NEAR DIFFUSER
SOCIAL SPACE

1

15F-SDV-01 NO
128 CMH
DISC VALVE
PHONE BOOTH

B.O.D-2700



RealTime

Integrated Infratech Pvt Ltd.

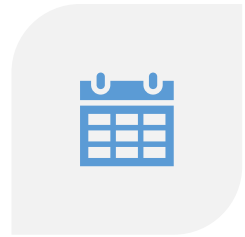
2

15F-VRF-IDU-03
1.5 TR,833 CMH
CASSATE UNIT
HUDDLE ROOM

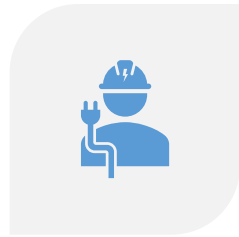
15F-VRF-IDU-04 TO 08
2 TR,1181 CMH
CASSATE UNIT-5 NO
WORK STATION



INTRODUCTION



Established in 2010



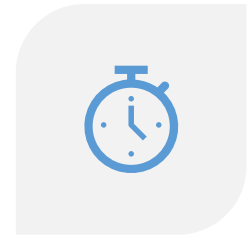
We are premier HVAC contractors serving major industrial and IT customers



Industry leader with many projects built to our credit



Dedicated team of professionals for smooth and efficient operation.



24-hour service for software industry with breakdown addressed with in 3 hours

WHY REALTIME?

Realtime Integrated Undertakes Design, Supply, Installation, Testing and Commissioning of HVAC Projects.

WE PROVIDE TOTAL HVAC SOLUTIONS COVERING :

1. Air cooled and water cooled chilled water systems
2. VRF System
3. Process Cooling
4. Packages and Ductables
5. Turnkey Projects.
6. Large office Fit outs with Variable Air Management and BMS
7. Retrofit project
8. Maintenance Service
9. Operating Contracts



REALTIME BUSINESS INFOGRAPHICS



DESIGN TEAM



Experienced Team of Professional Capable of Doing Multiple Projects Using Latest Design Softwares

SALES TEAM



Dedicated Sales Team to Address all Customers on Time with Best Proposals

PROJECTS TEAM



Well Experienced and Result Oriented Team which Can Accept all kind of Challenges

PROCUREMENT TEAM



A Team of People who Ensure to Deliver all Materials on Time and as per Technical Specification

SERVICE TEAM



Our Service Team Ensures All Customers Be Served On Time At Emergency

SAFETY TEAM



Management Considers No Phase of the Operation More Important Than the Health and Safety of the Employee and Instructors.

STAFF STRENGTH



PROJECTS – 28



SALES – 4



DESIGN – 3



PROCUREMENT – 2



SAFETY – 3



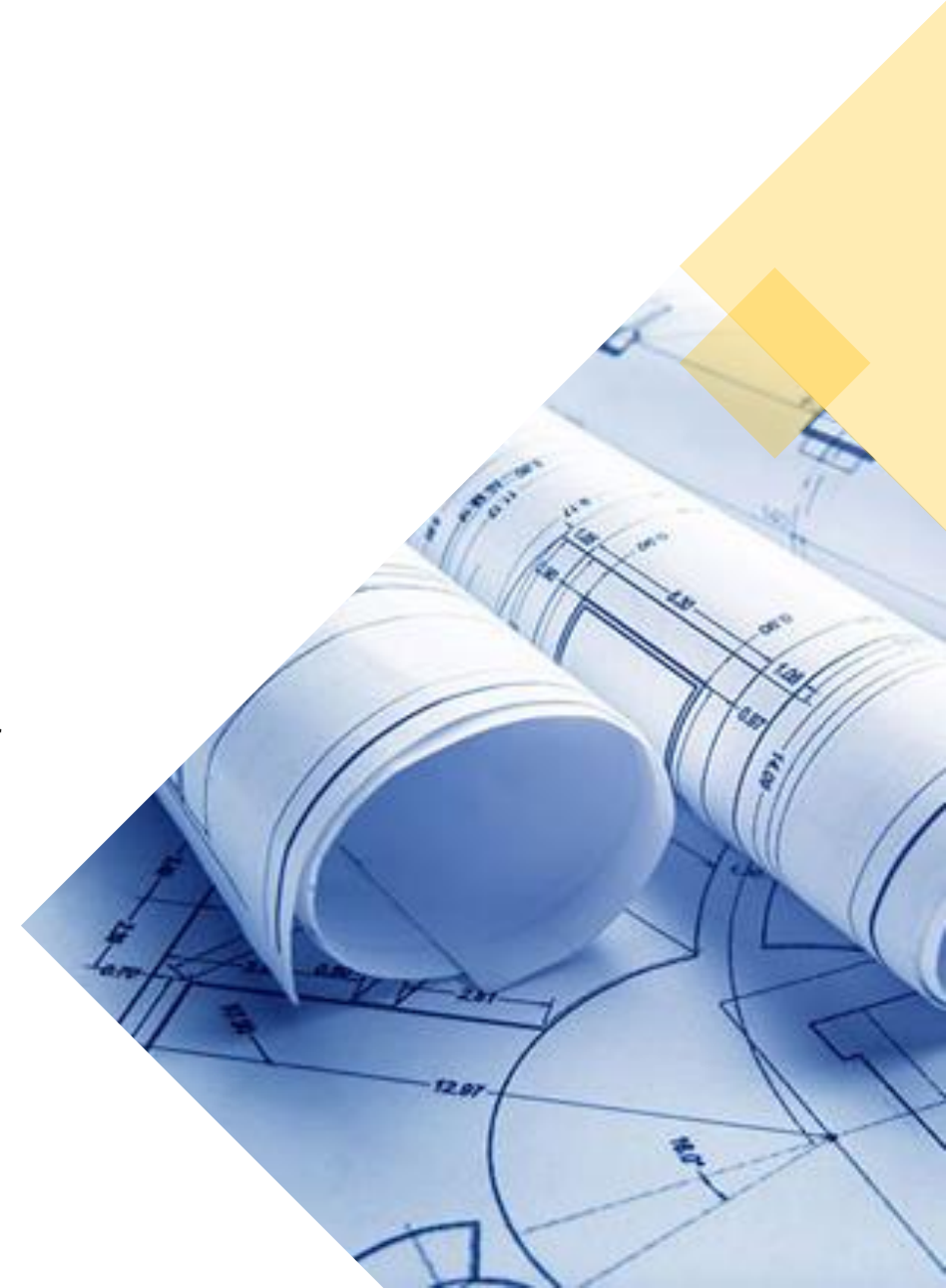
SERVICE – 38



ACCOUNTS – 4

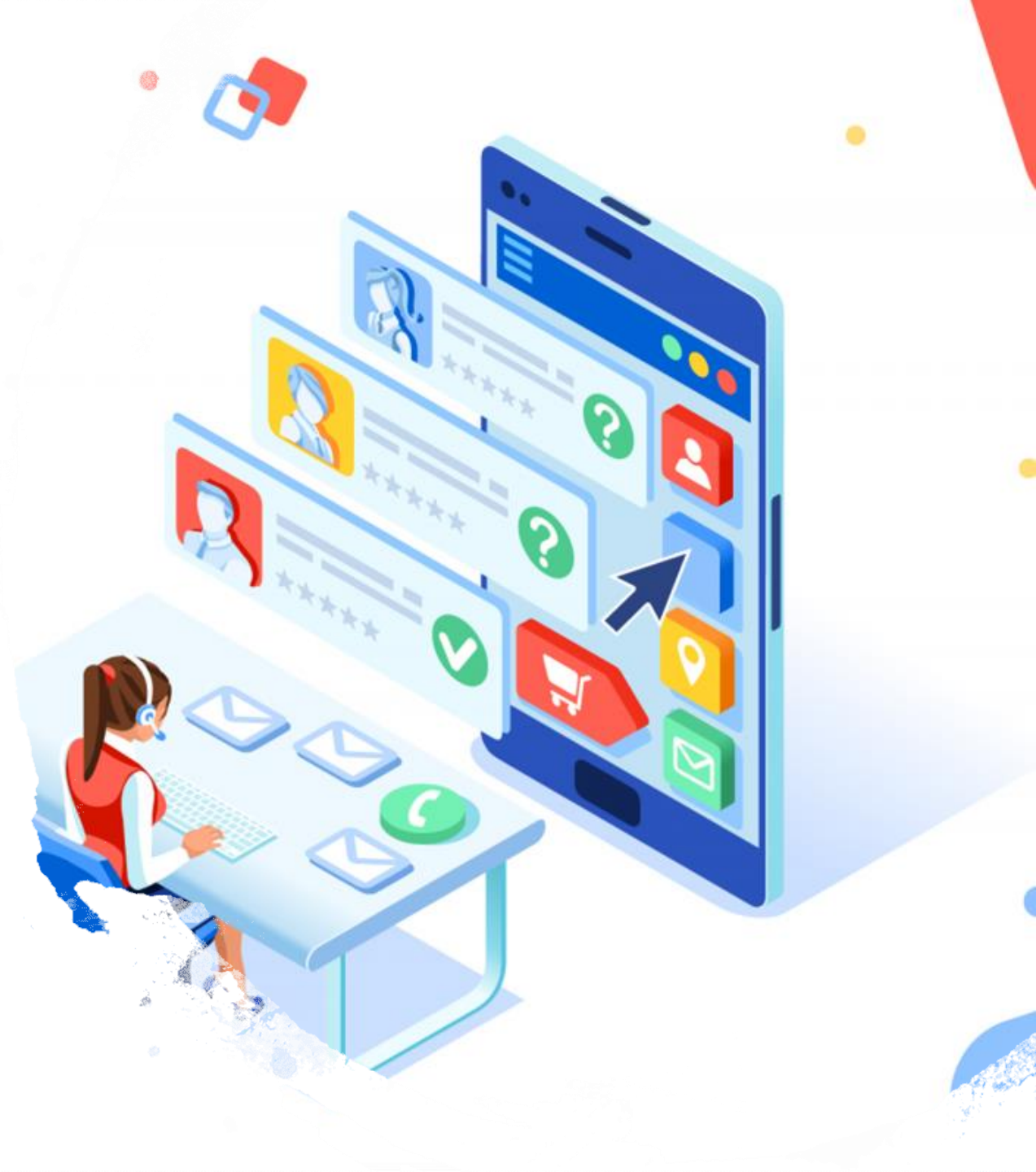
DESIGN TEAM

- Experienced team of professionals
- Capable of handling multiple projects at a time
- Flexibility to work with consultants as well as design-built jobs
- Latest software-based drawing preparation and heat load calculation
- Interfacing and working with clients in a professional manner to achieve project goals



SALES TEAM

- Dedicated sales team to address all customers on time
- Delivering best rates and solution
- Proven ability to develop new business and aggressively close sales
- Conceptual solutions to end-users in a highly competitive market.





PROJECT TEAM

- Overall 25 project engineers headed by 3 project managers
- Well experienced and result oriented team
- Project team shares variation of actual quantities vs BOQ to client once drawings are approved
- Coordinate with PMC, clients, consultant and our internal team for a smooth delivery of projects
- Our team hand over the project with a proper demo and introduce after service team during the demo

PROCUREMENT TEAM

- Team of 4 people who ensures to deliver the products as per technical specification
- Proper tracking of material ensures delivery of each material on time
- Reiterate with designers and suppliers for finalisation of quantity and quality



SERVICE TEAM

- A team of 35 people under 3 managers
- Separate focus for service delivery, AMC finalisation and value-added services
- Our service team ensures all customers be served on time at emergency
- Response time of 2 hours and A resolution time of 5 hours in case of minor and 12-24 hours in case of major breakdown.





QUALITY POLICY

We are committed to provide complete customer satisfaction by

- Using most advanced technology and equipment.
- Implementing best engineering practices
- High quality and cost effective design and project execution.
- Implementing international quality norms
- Striving continuously to attain excellent in every aspect

SAFETY POLICY



The personal safety and health of each employee and workers are of primary importance



We will maintain a safety and health program conforming to the best practices of organizations of Our size



The company accepts the responsibility for leadership of the safety and health program, for its effectiveness and improvement, and for providing the guidance and assistance to ensure safe working conditions.



Management considers no phase of the operation more important than the health and safety of the employees, Our contractors and other contractors at site.



BRITISH TELECOM

BUILT USE: OFFICE SPACE
AREA: 100000 SQFT
CONSULTANT: ELECTROARC

PMC: KNIGHTFRANK
ARCHITECT: DWP
LOCATION: BANGALORE



UBER

BUILT USE: OFFICE SPACE
AREA: 150000 SQFT
CONSULTANT: A SQUARE

PMC: CUSHMAN & WAKEFIELD
ARCHITECT: DWP
LOCATION: BANGALORE



PWC

BUILT USE: OFFICE SPACE
AREA: 70000 SQFT
CONSULTANT: PANASEA TECHNOLOGIES

PMC: CBRE
ARCHITECT: VIA DESIGN
LOCATION: BANGALORE



QUINTILES IMS

BUILT USE: OFFICE SPACE
AREA: 300000 SQFT

CONSULTANT: ELECTROARC
ARCHITECT: ZIETA,DWP
LOCATION: BANGALORE



ECW

BUILT USE: OFFICE SPACE
AREA: 100000 SQFT

CONSULTANT: E SOLUTION
ARCHITECT: DWP
LOCATION: BANGALORE



COVANSYS

BUILT USE: OFFICE SPACE
AREA: 300000 SQFT

PMC: KNIGHTFRANK
CONSULTANT: DESIGN TREE
LOCATION: BANGALORE



LIST OF MAJOR PROJECTS



APPLE

BUILT USE: OFFICE SPACE
AREA: 80000 SQFT

ARCHITECT: C&W
LOCATION: BANGALORE



SANDISK

BUILT USE: OFFICE SPACE
AREA: 200000 SQFT

ARCHITECT: DWP INTERICS
LOCATION: BANGALORE



EPSILON

BUILT USE: OFFICE SPACE
AREA: 300000 SQFT
CONSULTANT: SUSAN DESIGN

PMC: CUSHMAN & WAKEFIELD
ARCHITECT: AVA DESIGNS
LOCATION: BANGALORE



ABB

BUILT USE: OFFICE SPACE
AREA: 80000 SQFT

ARCHITECT: DWP INTERICS
CONSULTANT: ELECTRO ARC
LOCATION: BANGALORE



COGNIZANT

BUILT USE: OFFICE SPACE
AREA: 50000 SQFT

PMC: JLL
CONSULTANT: ELECTRO ARC
LOCATION: BANGALORE



STAR TV

BUILT USE: OFFICE SPACE
AREA: 80000 SQFT

PMC: CUSHMAN & WAKEFIELD
LOCATION: BANGALORE



MICRON

BUILT USE: PROCESS COOLING
TONNAGE : 120 TR

PMC: CUSHMAN & WAKEFIELD
CONSULTANT: AIRTRON
LOCATION: BANGALORE



WEWORK

BUILT USE: OFFICE SPACE
AREA: 200000 SQFT

PMC: SAVILLS
ARCHITECT: RSP
LOCATION: BANGALORE



ANSR

BUILT USE: OFFICE SPACE
AREA: 250000 SQFT
ARCHITECT: DSP

PMC: CUSHMAN & WAKEFIELD
CONSULTANT: DESIGN TREE
LOCATION: BANGALORE



TUV RHEINLAND

BUILT USE: PROCESS COOLING
TONNAGE: 135 TR

DESIGN & BUILT
LOCATION: VISAHKHAPATNAM



JC PENNY

BUILT USE: OFFICE SPACE
AREA: 150000
ARCHITECT: ADRIANSE

PMC: CUSHMAN & WAKEFIELD
CONSULTANT: LEAD
LOCATION: BANGALORE

LIST OF MAJOR PROJECTS





ITRON

BUILT USE: OFFICE SPACE
AREA: 50000 SQFT

PMC: CUSHMAN & WAKEFIELD
ARCHITECT: SYMMETRICS
LOCATION: BANGALORE



MAERSK

BUILT USE: OFFICE SPACE
AREA: 150000 SQFT

PMC: CUSHMAN & WAKEFIELD
ARCHITECT: ADRIANSE
LOCATION: BANGALORE



XYLEM

BUILT USE: OFFICE SPACE
AREA: 50000 SQFT
ARCHITECT: AVA

PMC: CUSHMAN & WAKEFIELD
CONSULTANT: VERTEX
LOCATION: BANGALORE



STANDARD CHARTERED BANK

BUILT USE: OFFICE SPACE
AREA: 150000 SQFT

PMC: CBRE
ARCHITECT: RAJ CONSULTANT
LOCATION: BANGALORE



ADOBE

BUILT USE: OFFICE SPACE
AREA: 100000 SQFT

CONSULTANT: ELECTRO ARC
LOCATION: BANGALORE



ATHER ENERGY

BUILT USE: OFFICE SPACE
AREA: 80000 SQFT

PMC: KNIGHTFRANK
CONSULTANT: VERTEX
LOCATION: BANGALORE



KPMG

BUILT USE: OFFICE S;PACE
AREA: 50000
CONSULTANT: LESSA PROSERVE

PMC: CBRE
ARCHITECT: EDIFICE
LOCATION: HYDERABAD



GENPACT

BUILT USE: OFFICE SPACE
AREA: 250000 SQFT

ARCHITECT: DWP
CONSULTANT: ELECTROARC
LOCATION: BANGALORE



LISSIE HOSPITAL

BUILT USE: HOSPITAL
AREA: 300000 SQFT

CONSULTANT: ALEX CYRIAC
LOCATION: KOCHI



MAXLINEAR

BUILT USE: OFFICE SPACE
AREA: 30000
ARCHITECT: AVA

PMC: CUSHMAN & WAKEFIELD
CONSULTANT: SUSAN DESIGN
LOCATION: VISAHKHAPATNAM



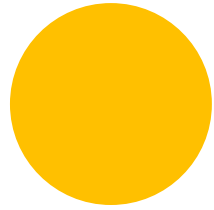
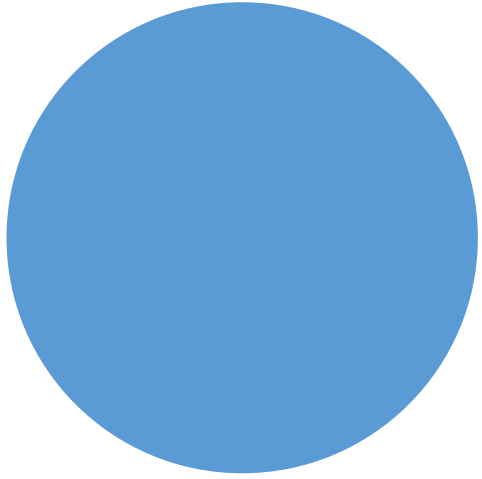
SYNAPTICS

BUILT USE: OFFICE SPACE
AREA: 15000
ARCHITECT: AVA

PMC: CUSHMAN & WAKEFIELD
CONSULTANT: SUSAN DESIGN
LOCATION: VISAHKHAPATNAM

LIST OF MAJOR PROJECTS





THANK YOU...

